



Hummer H2 15" 4 piston rear brake system



Hummer H2 15" 6 piston front brake system

**WORLD LEADER IN BRAKING TECHNOLOGY**





Michael Schumacher 7 Time F1 World Champion

***BRAKE LIKE A CHAMPION***



## UNEQUALED BREMBO PERFORMANCE

Brembo is a fascinating success story 43 years in the making. Within that time Brembo has been at the forefront of the motorsports arena, winning over 150 world championships; a record that is unprecedented in the industry. Brembo high performance brakes are the choice of Ferrari, the most successful Race Team in F1 history and the most aspirational and finest engineered automobiles in the world.

Racing teams and manufacturers like Porsche, Mercedes-Benz AMG and Lamborghini who demand the best, turn to the expert in braking technology and performance; Brembo. The strong support and trusted relationships that Brembo has with over 31 original equipment manufacturers and hundreds of Championship Winning Race Teams in F1, WRC, NASCAR, Indy Car and American LeMans, is based on the fact that Brembo is the industry benchmark. There is no other company or product line on the market that can match Brembo's level of technology and performance.

The bloodline between racer and manufacturer, experience and heritage, leads directly to the everyday driving experience. Brembo's pedigree legacy makes responses quicker, durability greater, confidence stronger and braking performance better. That is why Brembo's world leading brake systems exceed the demands of today's technically advanced motor vehicles. Over 400 individual high performance upgrades, designed vehicle specific, for European, import and domestic passenger vehicles, as well as trucks and SUV's. Brembo brakes provide the additional level of performance and safety required for more aggressive drivers or situations that demand extreme performance.



Headquartered in Bergamo, Italy, Brembo S.p.A., employs over 3900 people in more than 14 countries including 400 engineers dedicated to research, development and innovation.



## **BREMBO ORIGINAL EQUIPMENT MANUFACTURERS**

Acura  
AMG Mercedes-Benz  
Aston Martin  
Audi  
BMW  
Cadillac  
DaimlerChrysler  
Ferrari  
Ford  
Infiniti  
Jaguar  
Lamborghini  
Maserati  
Mitsubishi  
Nissan  
Porsche  
Subaru

## **BREMBO FACTORY EQUIPPED SUPERCARS**

Audi Le Mans  
Ferrari Enzo  
Ford GT  
Maserati MC12  
McLaren F1  
Mercedes McLaren SLR  
Porsche Carrera GT  
Nissan Skyline  
Saleen S7

**“The Brembo High Performance program is the direct result of winning over 150 World Championships and decades of designing brake systems for the World’s Top Supercars.”**

## **BREMBO DOMINATED MOTORSPORTS**

Formula 1

World Rally Championship

NASCAR

Champ Car World Series

Indy Racing League

American Le Man Series

Grand American ROLEX Sports Car Series

SPEED World Challenge

FIA GT Championship

## **BREMBO EQUIPPED DRIVERS/TEAMS**

F1 / Michael Schumacher - Ferrari

F1 / Jacques Villeneuve - Sauber

F1 / Jarno Trulli - Toyota

WRC / Marcus Gronholm - Peugeot

WRC / Markko Martin - FORD

NASCAR / Jeff Gordon - Hendrick Motorsports

NASCAR / Jimmie Johnson - Hendrick Motorsports

NASCAR / Kurt Busch - Roush Racing

NASCAR / Dale Earnhardt Jr. - Dale Earnhardt Inc.

CHAMP CAR / Paul Tracy - Forsythe Racing

CHAMP CAR / Jimmy Vasser - PKV Racing

IRL / Robby Gordon - Robby Gordon Motorsports

ALMS / JJ Lehto - Champion ADT Racing

ALMS / Timo Bernhard - Alex Job Racing

Grand Am / Andy Wallace - Howard Boss Motorsports

Trans-Am / Tommy Kendall - Rocketsports Racing

SPEED World Challenge / Andy Pilgrim - Cadillac CTS-V Team



**“Over the past 11 years Brembo has been used by my racing teams and is also on my personal cars. Clearly they understand brake systems and demanding performance driven customers.”**

**-Bobby Rahal  
3 time CART Champion  
and Indy 500 winner**



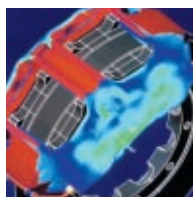
## GRAN TURISMO | GT BRAKE SYSTEM

*Two piece rotor applications*

The Gran Turismo system's level of technology and performance is unrivaled by any other product on the market. By utilizing larger calipers and discs, thermal capacity and brake torque is increased. This potent combination offers the extreme in Brembo's leading edge technology for high performance street or track use applications.

- Brembo 4, 6, or 8 piston calipers with sequentially sized pistons; includes color choices of red, black or silver calipers
- Brembo two piece "floating" hat and rotor assemblies reduce unsprung and rotating weight and dissipate heat faster
- Brembo drilled or slotted two piece rotors up to 15" (380mm)
- DOT and TUV certified Goodridge stainless steel braided brake lines; are guaranteed for life
- Brembo high performance brake pads
- Brembo "floating" anti-rattle rotor hardware
- Brembo billet aluminum brackets with aircraft quality hardware.

**Brembo brake systems are fully compatible with ABS and traction control system. All of the necessary hardware is included to insure seamless installation.**



Established in 1961 in Bergamo, Italy, Brembo S.p.A, is the World Leader in engineering, development and production of high performance braking systems and components. Brembo is an engineering company at heart with over 400 engineers dedicated to research, development and innovation. Of equal importance is Brembo's total commitment to manufacturing and quality assurance. Brembo controls every step of the process, forging rotors and calipers in their own foundries, manufacturing components to the highest standards in the industry and testing each component as many as 500,000 cycles to guarantee quality and performance.





“The common thread in all of our Championships is Brembo brakes. On the race track the passing is not done on acceleration, it’s done under braking.”

-Paul Gentilozzi  
 4 time Trans-Am Champion



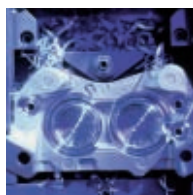
## GRAN TURISMO | GT BRAKE SYSTEM

*One piece rotor applications*

Grand Turismo GT one piece rotor systems offer a cost effective solution to the high performance brake upgrade. Includes oversized calipers and rotors for increased brake torque and thermal capacity. These performance upgrades are available for many European, domestic and import vehicles.


- Brembo 4 piston calipers with sequentially sized pistons. Includes color choices of red, black or silver calipers
- Brembo drilled or slotted one piece rotor up to 14" (355mm)
- DOT and TUV certified Goodridge stainless steel braided brake lines; are guaranteed for life
- Brembo high performance brake pads
- Brembo billet aluminum brackets with quality hardware that is application specific

**Brembo brake systems are fully compatible with ABS and traction control system. All of the necessary hardware is included to insure seamless installation.**



Every Brembo system is designed for optimum brake balance in all driving situations. Brembo engineers painstakingly research vehicle dynamics including front to rear weight ratio, suspension geometry, horsepower and maximum load capacity. Each system is then specifically designed and tested to maximize vehicle performance. Brembo systems will respond with optimum brake balance; a foundational benchmark in every Brembo system.





**“Brembo is clearly  
the choice  
of Champions.”**  
-Richard Petty  
NASCAR Legend and  
7 time Winston Cup Champion





## TURISMO BRAKE SYSTEM

*For current GM trucks and SUV's*

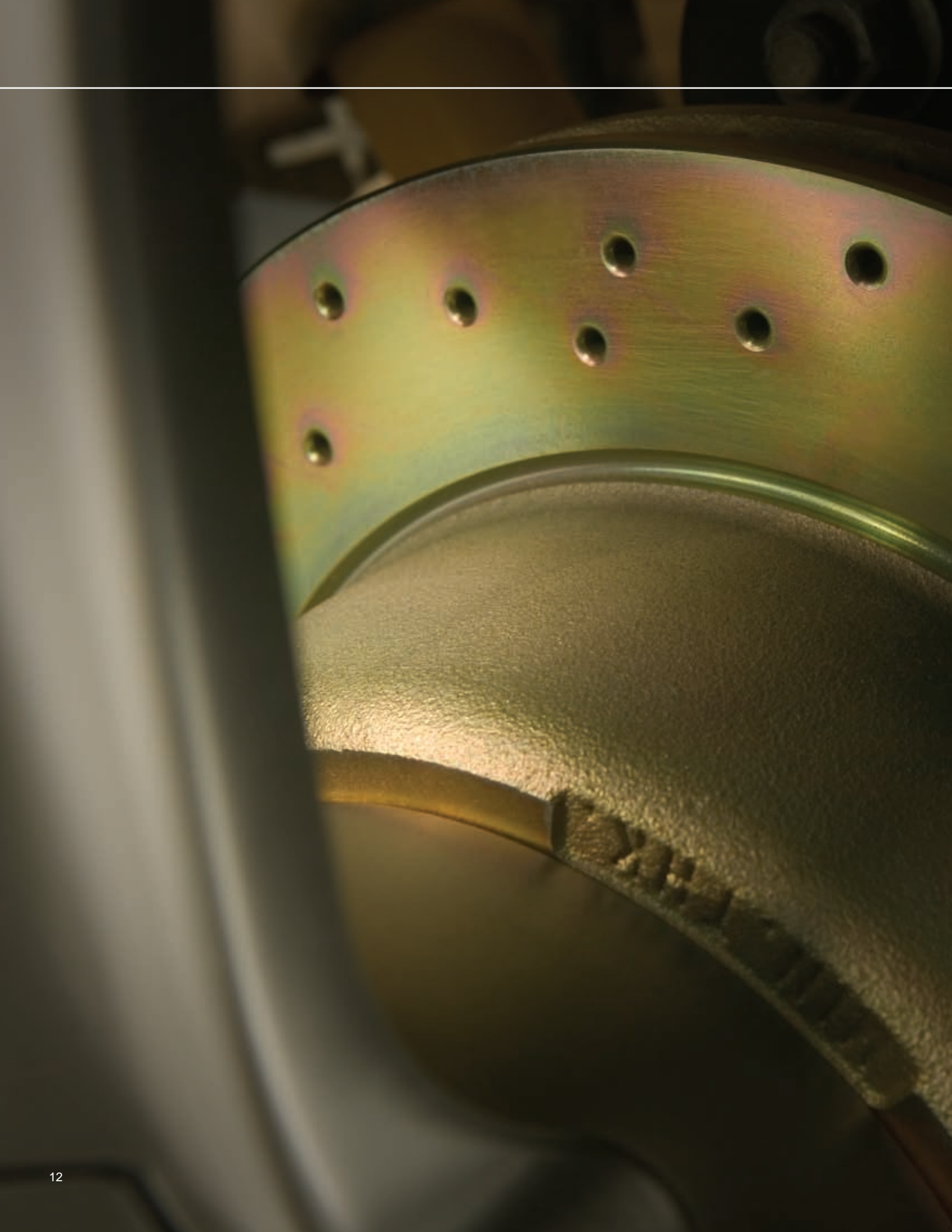
The Turismo system achieves the maximum braking power possible while utilizing the vehicle's original calipers. Thermal capacity and brake torque are increased to shorten stopping distances and reduce brake fade. The Turismo system is a great solution for vehicles with larger aftermarket wheels and tires, performance upgrades, or heavy-duty towing needs.

- Brembo oversized two piece "floating" anti-rattle hat and rotor assemblies in drilled or slotted up to 14.4" (365mm)
- Brembo precision billet hardware relocates the vehicle's stock calipers to increase brake torque
- Brembo high performance brake pads
- DOT and TUV certified Goodridge stainless steel braided brake lines for a firmer brake pedal

**Brembo brake systems are fully compatible with ABS and traction control system. All of the necessary hardware is included to insure seamless installation.**



In cooperation with each vehicle manufacturer, Brembo has developed exclusive proprietary software used to design every brake system. Each vehicle has its own unique blueprint with specific performance demands which must be considered when designing a performance brake system. Within every Brembo system is the key to unlock your vehicle's maximum braking performance for every situation.





## SPORT BRAKE SYSTEM

Brembo Sport brake systems are designed to fit under the factory wheels and tires utilizing the original calipers to provide improved performance and appearance. Brembo Sport Systems offer excellent stopping power in everyday traffic and performance driving. The Sport system reduces operating temperatures and fade while improving wet weather performance and initial pad "bite".

- Choose direct replacement cross drilled or slotted rotors

**Brembo brake systems are fully compatible with ABS and traction control system. All of the necessary hardware is included to insure seamless installation.**



Brembo components are ISO 9001, 9002 and QS 9000 certified for quality and safety. This industry certification assures that the manufacturing facility making your product adheres to the strictest internal regulation and quality control policies possible.





## HIGHLY PROTECTIVE PACKAGING & COMPREHENSIVE INSTRUCTION MANUAL

Only Brembo packages each of its components in fitted foam insulation to ensure that each system reaches you in perfect condition. Comprehensive instruction manual included with every Brembo system.

## DRILLED / SLOTTED

Both drilled & slotted rotors offer improved initial bite & provide an exit path for water, debris & gases. Manufacturers like Porsche, Ferrari, & AMG Mercedes offer drilled rotors for performance and an aggressive look. Slotted rotors are recommended for extreme conditions & specifically fitted for vehicles with racing pads.



One piece rotor assembly

## CALIPER MOUNTING BRACKETS & HARDWARE

All caliper mounting brackets are precision milled from superior quality materials. Each Brembo system includes all necessary hardware for installation.



## GOODRIDGE STAINLESS STEEL BRAIDED BRAKE LINES

Goodridge is the leading line supplier to OE manufactures and championship winning race teams worldwide. With the tightest bend radius in the industry and the lowest rate of expansion, you can be assured that every inch of pressure from the pedal is transferred directly to where it counts - the caliper. Goodridge is the only brake hose system approved for use in every country in the world and is guaranteed for life.

## OPTIMUM BRAKE BALANCE

Brembo uses several hundred caliper, piston and disc combinations to achieve maximum performance and optimum brake balance. Calipers are designed with differential piston bore sizes for even pad wear and OEM approved dust boots to protect the pressure seals & fluid.



OPTIMUM  
BRAKE BALANCE



## BREMBO HIGH PERFORMANCE BRAKE PADS

Each Brembo system is delivered with preloaded calipers. Brake pads are selected vehicle specific for high performance.

## FLOATING ANTI-RATTLE HARDWARE

Designed by Brembo to minimize noise between the floating disc & aluminum hat. Allows rotor to expand & contract naturally under extreme temperatures to reduce distortion of the hat & rotor assembly.



## QUICK RELEASE PAD RETAINING SYSTEM

Incorporates anti-rattle feature to eliminate noise and is designed for quick and easy pad changes.



Two piece "floating" rotor assembly

## OVERSIZED TWO PIECE "FLOATING" ROTORS

Race inspired design reduces unsprung and rotating weight while increasing brake torque and heat dissipation.



## VANE GEOMETRY

Our discs use three distinctive vane patterns, pillar, straight & curved, to assure maximum air flow & cooling. Vane patterns are selected by Brembo Engineers to provide optimum heat dissipation for each application.



## RADIAL MOUNT CALIPERS

Manufactured with proprietary aluminum to guarantee quality & performance. Anodized & then finished in red, black or silver, to protect the internal & external surfaces from the environment.



## WHY DO I NEED TO UPGRADE MY BRAKE SYSTEM?

A Brembo High Performance Brake system offers many advantages over your vehicles original brake system. Increased diameter rotors and radial mount calipers greatly improve brake system performance, heat dissipation, and reduce brake fade. Aluminum calipers and lighter weight two piece rotors reduce unsprung weight and differential piston bores provide optimum brake balance and even pad wear.

## IS THE BREMBO BRAKE UPGRADE DESIGNED SPECIFICALLY FOR MY VEHICLE?

Brembo Engineers design each brake upgrade specifically for your vehicle and driving conditions choosing from hundreds of caliper, piston and rotor combinations to achieve maximum performance and optimum brake balance. Additionally, Brembo Brake Upgrades are easy to install and are designed to work seamlessly with your vehicle's stock master cylinder, ABS and traction control system.

## WILL I NEED OVERSIZED WHEELS AND TIRES?

Wheel size and wheel clearance are important considerations when upgrading your brake system. Many new performance vehicles come with larger wheels and tires and can accommodate a Brembo Brake Upgrade. Always check with your sales associate to ensure that your wheels provide the clearance and offset necessary to accommodate your new brake system.

## DO I NEED TO UPGRADE THE FRONT AND REAR BRAKES?

Each Brembo upgrade is designed to give you the flexibility to upgrade front or front and rear while maintaining optimum brake balance and performance. Complete rear systems are available for most applications and are engineered specifically to compliment the front system.

## WHAT IS THE DIFFERENCE BETWEEN DRILLED AND SLOTTED ROTORS?

Both drilled and slotted rotors provide increased brake system performance. They continuously clean and refresh the pad surface, shed water and debris, prevent gas build up, and increase pad "bite". Drilled discs offer improved ventilation and slotted discs offer increased durability under extreme braking conditions, specifically when vehicles are fitted with race pads.