



Performance Innovations for GM Vehicles

- Air Induction Systems
- Throttle Bodies
- Ported Cylinder Heads
- Intake Manifolds
- Supercharger Kits
- Headers
- Big Brake Kits
- Brake Systems
- Suspension Mods
- Engine Mounts
- Front & Rear Sway Bars
- Billet Aluminum Pulleys
- Silicone Adapters
- Custom Vehicle Packages
- Carbon Fiber Hoods

2411-A Anson Drive
Mississauga, Ontario L5S 1G1 Canada
Phone Toll Free 1-877-855-4920 or 905-671-9998

Air Induction Systems

Air Induction Systems - Easy Bolt-on for improved air flow and increased power. Includes polished aluminum pipe, silicone adapters, PCV bypass hose, IAT sensor hole and K&N cone filter.



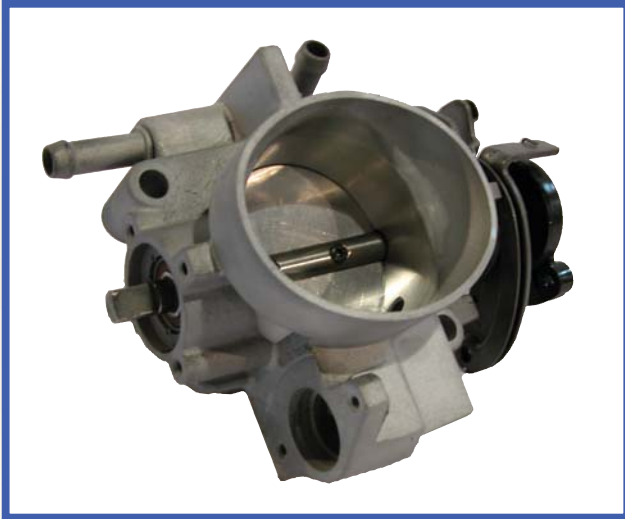
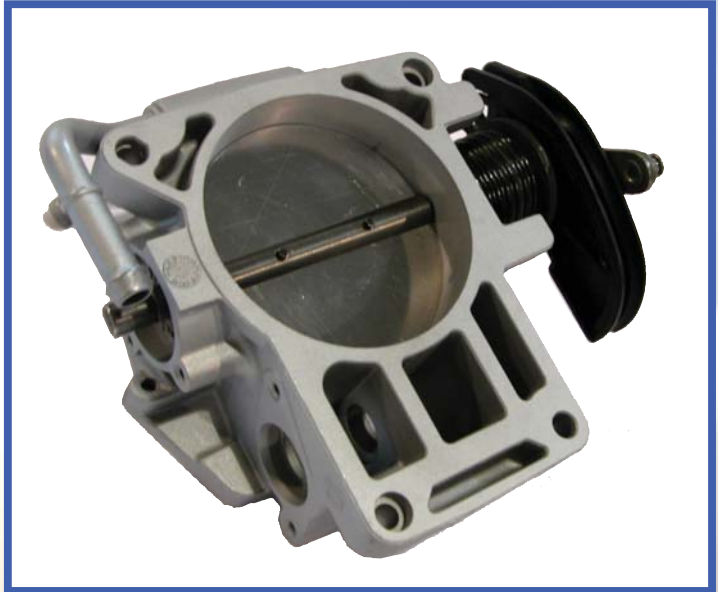
Air Induction Systems:

89-94 Cavalier/Sunbird (2.2L)
95-97 Cavalier/Sunfire (2.5L)
98-02 Cavalier/Sunfire (2200)
85-89 Cavalier/Sunbird (2.8L)
90-94 Cavalier/Sunbird (3.1L)
96-02 Cavalier/Sunfire (2.4L)
96-98 Grand-Am (2.4L)
99-02 Malibu (2.4L)
96-98 Grand-Am (3100)
99-03 Alero (3100)
99-03 Grand-Am (3400)
91-96 Monte Carlo (3.4L)
94-96 Lumina (3.4L)
90-94 Monte Carlo (3.1L)
95-96 Malibu (3100)
02-05 Cavalier/Sunfire (2.2L)
02-03 Grand-Am (2.2L)
03-04 Saturn (2.2L)
94-96 Aurora (4.0L)
97-00 Aurora (4.0L)
92-98 Bonneville (3.8L)
99-03 Century (3.8L)
03 CTS (3.2L)



Throttle Bodies

Throttle Bodies - 59 - 110 mm Throttle Bodies - Straight through design and comes with a new CNC throttle plate. Easy bolt-on install for 10+ HP gain.



Throttle Bodies:

90-94 Cavalier/Sunbird (62mm)
85-89 Cavalier/Sunbird (62mm)
96-98 Grand-Am (62mm)
96-02 Cavalier/Sunfire (62mm)
98-02 Cavalier/Sunfire (62mm)
02-05 Cavalier/Sunfire (62mm)
02-03 N-Body (62mm)
03-04 ION (62mm)
99-03 N-Body (62mm)
99-02 N-Body (62mm)
89-95 N-Body (62mm)
95 Cavalier/Sunfire (62mm)
99-03 W-Body (62mm)
89-94 Cavalier/Sunbird (59mm)
95-97 Cavalier/Sunfire (59mm)
88-89 W-Body (62mm)
90-96 W-Body (62mm)
91-95 W-Body (72mm)
96 W-Body (72mm)
94-95 Aurora (80mm)
96-99 Aurora (80mm)
93-05 Northstar (80mm)
03 CTS (110mm)

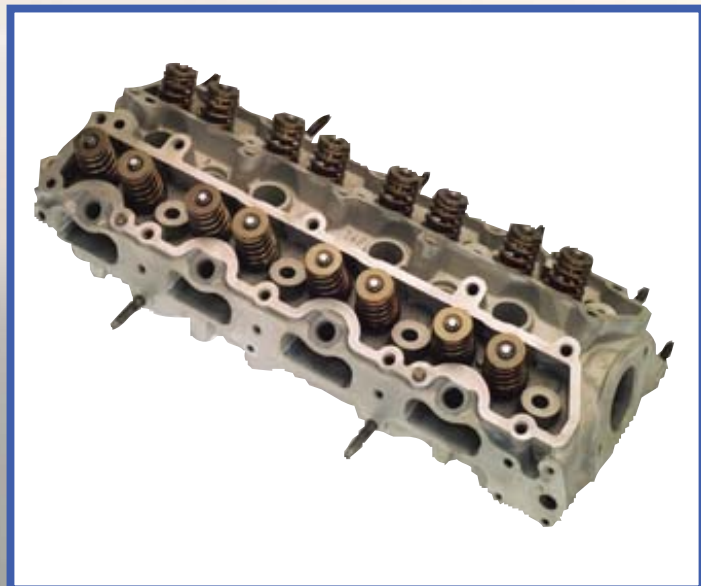
Call to order! Toll Free Phone Number 1-877-855-4920

Ported Cylinder Heads

Ported Head- Ported and Polished with three angle valve job, sold assembled with new valves and harder valve springs. SS valves available for forced induction or NOS applications.

Ported Cylinder Heads:

95-97 Cavalier/Sunfire (2.2L)
98-02 Cavalier/Sunfire (2200)
96-02 Cavalier/Sunfire (2.4L)
02-05 Cavalier/Sunfire (Ecotec 2.2L)
96-98 Grand-Am (3100)
90-94 J-Body & W-Body (3.1L)
99-03 Grand-Am & W-Body (3400)
99-03 Grand-Am (3100)
90-95 J-Body & N-Body (2.3L)
94-03 Aurora (4.0L)
93-03 Cadillac (4.6L)
92-96 DOHC W-Body (3.4L)



Intake Manifolds

Ported Intake Manifolds - Bolt-on replacement for your existing parts - provides 18% more air flow and is match ported to our Throttle Bodies and RSM ported heads.

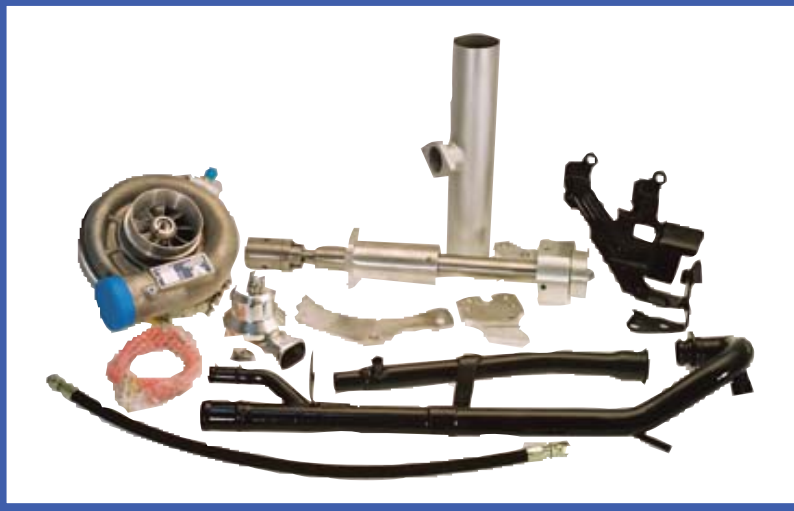
Intake Manifolds:

96-98 Cavalier/Sunfire w/EGR (2.4L Manifold)
99-02 Cavalier/Sunfire wo/EGR (2.4L Manifold)
95-97 Cavalier/Sunfire (2.2L Manifold)
98-99 Cavalier/Sunfire w/EGR (2200 Manifold)
00-02 Cavalier/Sunfire wo/EGR (2200 Manifold)
95-98 N-Body w/2ND EGR (3100 Upper Manifold)
94 N-Body w/1st EGR (3100 Upper Manifold)
99-02 N-Body (3400 Upper Manifold)
90-94 Cavalier/Sunbird (3.1L Upper Manifold)
85-89 Cavalier/Sunbird (2.8L Upper Manifold)
94-98 N-Body (3100 Lower Manifold)
99-02 N-Body (3400 Lower Manifold)
90-94 Cavalier/Sunbird (3.1L Lower Manifold)
85-89 Cavalier/Sunbird (2.8L Lower Manifold)
90-94 Cavalier/Sunbird (2.2L Manifold)
90-94 N-body (2.3L Manifold)
95 Cavalier/Sunfire (2.3L Manifold)
99-02 N-Body (3100 Upper Manifold)
99-02 N-Body (3100 Lower Manifold)
92-96 W-Body (3.4L DOHC Upper Manifold)
92-96 W-Body (3.4L DOHC Lower Manifold)



Call to order! Toll Free Phone Number 1-877-855-4920

Supercharger Kits (Stage1)



Stage I RSM Supercharger Kit includes Vortech Supercharger, all brackets and oil lines, belt and pulleys, ECU programming, adjustable blow-off valve, FMU, induction piping and K&N cone filter. All the parts needed for the install are included in the kit, no extras to buy. 60 HP gain at 6PSI with no other mods.

Supercharger Kits:

96-00 Cavalier/Sunfire (2.4L 5 Speed)
96-02 Cavalier/Sunfire (2.4L Automatic)
01-02 Cavalier/Sunfire (2.4L 5 Speed)
95-97 Cavalier/Sunfire (2.2L 5 Speed)
95-97 Cavalier/Sunfire (2.2L Automatic)
98-00 Cavalier/Sunfire (2200 5 Speed)
00-02 Cavalier/Sunfire (2200 5 Speed)
98-02 Cavalier/Sunfire (2200 Automatic)
02-05 Cavalier/Sunfire (2.2L Ecotec Automatic)
02-05 Cavalier/Sunfire (2.2L Ecotec 5 Speed)
96-98 Grand-Am (3100 Automatic)
99-03 Grand-Am (3400 Automatic)
96-98 Grand-Am (2.4L Automatic)
96-98 Grand-Am (2.4L 5 Speed)
99-00 Grand-Am (2.4L 5 Speed)
99-02 Grand-Am (2.4L Automatic)
03-04 Grand-Am (2.2L Ecotec 5 Speed)
03-04 Grand-Am (2.2L Ecotec Automatic)
99-04 W-Body (3400 Automatic)
95-99 F-Body (3.4L Automatic)

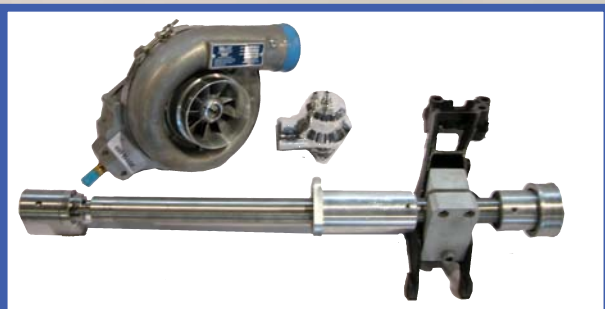


Supercharger Kits (stage2)

Stage II RSM Supercharger Kit includes up to 1200 CFM Vortech Supercharger, bigger injectors, all brackets and oil lines, belt and pulleys, ECU programming, adjustable blow-off valve, FMU, induction piping and K&N cone filter. All parts needed are included with the kit, no extras to buy however a high flow exhaust is recommended. 85 HP gain at 10PSI.

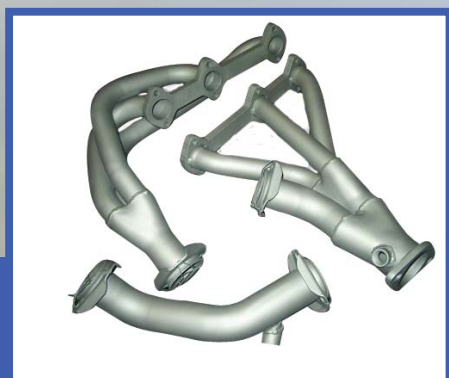
Supercharger Kits:

96-00 Cavalier/Sunfire (2.4L 5 Speed)
01-02 Cavalier/Sunfire (2.4L 5 Speed)
95-97 Cavalier/Sunfire (2.4L 5 Speed)
98-00 Cavalier/Sunfire (2200 5 Speed)
00-02 Cavalier/Sunfire (2200 5 Speed)
02-05 Cavalier/Sunfire (Ecotec 5 Speed)
96-98 Grand-Am (2.4L 5 Speed)
99-00 Grand-Am (2.4L 5 Speed)
03-04 Grand-Am (2.2L Ecotec 5 Speed)



Call to order! Toll Free Phone Number 1-877-855-4920

Headers



Applications:

95 Cavalier/Sunfire (2.3L)
96-98 Cavalier/Sunfire (2.4L)
99-02 Cavalier/Sunfire (2.4L)
02-05 Cavalier/Sunfire (2.2L Ecotec)
95-97 Cavalier/Sunfire (2.2L)
98-02 Cavalier/Sunfire (2200)
99-02 Grand-Am/Alero (2.4L)
02-05 Grand-Am/Alero (2.2L Ecotec)
00 and up W-Body (3400 & 3800)

Big Brake Upgrades

Applications:

95-05 Cavalier/Sunfire (3rd & 4th Gen. - Front)
95-05 Cavalier/Sunfire (3rd & 4th Gen. - Rear)
86-94 Cavalier/Sunbird/Grand-Am (1st & 2nd Gen. - Front)
86-94 Cavalier/Sunbird/Grand-Am (1st & 2nd Gen. - Rear)
99-05 Grand-Am (4th Gen. - Front)
99-05 Grand-Am (4th Gen. - Rear)
03-05 Saturn Ion (Front)
03-05 Saturn Ion (Rear)
89-96 W-Body (1st Gen. - Front)
89-96 W-Body (1st Gen. - Rear)

Front & rear 12" Brake Conversions. Dual piston calipers (front) vented rotors, braided brake lines and carbon metallic pads. Rear uses stock e-brake cable. Bolt on install, comes complete with brackets, installs in less than 4 hours.



Braking Systems

Slotted/Crossdrilled/Brake Pad Applications:

Buick

- Century
- LeSabre
- Park Avenue
- Regal

Cadillac

- CTS
- DTS
- Escalade
- ETC
- STS
- XLR

Saturn

- ION

Chevrolet

- Beretta
- Camaro
- Cavalier
- Cobalt
- Corvette
- Impala
- Lumina
- Optra
- Malibu
- Monte Carlo

Oldsmobile

- Achieva
- Alero
- Aurora
- Cutlass

Pontiac

- Bonneville
- Fiero
- Firebird
- G6
- Grand Am
- Grand Prix
- Pursuit
- Sunbird
- Sunfire
- Vibe

SUV/Vans

- Bravada
- Envoy
- Rainier
- TrailBlazer
- Aztek
- Rendezvous
- Montana
- Silhouette
- Venture

Available for all years (Brake Pads Front & Rear)

Slotted or Cross drilled rotors -
Improve braking and prevent
brake fade. Work best with
Carbon Ceramic pads.



Call to order! Toll Free Phone Number 1-877-855-4920

Suspension Parts

Poly Urethane Bushings:

85-89 Cavalier/Sunbird
90-94 Cavalier/Sunbird
95-02 Cavalier/Sunfire
02-05 Cavalier/Sunfire
95-02 Cavalier/Sunfire
03-05 Cavalier/Sunfire
90-95 Grand-Am
96-98 Grand-Am
99-03 N-Body
94-96 Aurora
97-99 Aurora
01-03 Aurora
88-96 W-Body
97-002 W-Body
2003 CTS
03-04 Saturn ION

Springs:

Buick

Century/LeSabre/Park Avenue/Regal

Cadillac

CTS/DTS/Escalade/ETC/STS/XLR

Saturn

ION

Chevrolet Beretta/Camaro/Cavalier/Cobalt/Corvette

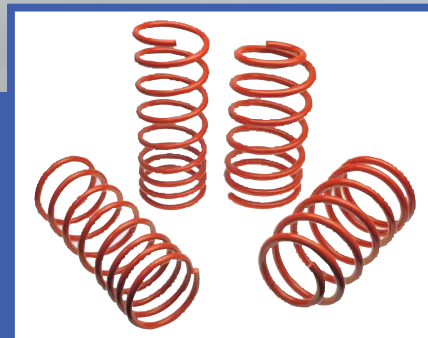
Impala/Lumina/Malibu/Monte Carlo/Opra

Oldsmobile

Achieva/Alero/Aurora/Cutlass

Pontiac Bonneville/Fiero/Firebird/G6/Grand Am

Grand Prix/Pursuit/Sunbird/Sunfire/Vibe



B&G Lowering Springs lower the car 1.6" and improve handling with a firm ride

Polyurethane Bushing Kit - includes front control arm bushings, rear axle bushings and poly sway bar bushings with end links. Improves handling by eliminating suspension flex



Engine Mounts

Lower Engine Mounts:

95-02 Cavalier/Sunfire (2.4L)
98-02 Cavalier/Sunfire (2200)
95-97 Cavalier/Sunfire
90-95 Grand-Am
96-98 Grand-Am

Upper Engine Mounts:

95-02 Cavalier/Sunfire (2.4L)
98-02 Cavalier/Sunfire (2200)
95-97 Cavalier/Sunfire
90-95 Grand-Am
96-98 Grand-Am



Polyurethane Lower Engine Mount - Prevents engine movement and recovers up to 10 ft/lbs torque

Polyurethane Upper Engine Mount - Polyurethane insert to prevent engine movement, the last upper engine mount you'll ever have to buy.



Front Strut Tower Braces

Front Strut Bar:

Buick

Century/LeSabre/Park Avenue/Regal

Cadillac

CTS/DTS/Escalade/ETC/STS/XLR

Saturn

ION

Chevrolet Beretta/Camaro/Cavalier

Cobalt/Corvette/Impala/Lumina

Malibu/Monte Carlo/Opra

Oldsmobile

Achieva/Alero/Aurora/Cutlass

Pontiac

Fiero/Firebird/G6/Grand Am

Grand Prix/Pursuit/Sunbird

Sunfire/Vibe

SUVs

Bravada/Envoy/Rainier/TrailBlazer

Aztek/Rendezvous



Front Strut Tower Brace - includes polished aluminum bar with adjustable end links and coated mounting plates. Reduces chassis flex during cornering.

Rear Strut Tower Braces

Rear Strut Bar:

85-94 Cavalier/Sunbird

85-94 Grand-Am

95-02 Cavalier/Sunfire

99-03 Grand-Am

02-05 Cavalier/Sunfire

88-96 W-Body

97-02 W Body

94-96 Aurora

97-99 Aurora

01-03 Aurora

2003 CTS

Rear Strut Tower Brace - includes polished aluminum bar with adjustable end links and coated plates. Tightens the rear end during cornering, very noticeable improvement.



Call to order! Toll Free Phone Number 1-877-855-4920

Billet Aluminum Pulleys

Pulleys:

2.4 LD9 Motor

Stock size crank pulley - (95-02 Cavalier/Sunfire)

Underdrive - (95-02 Cavalier/Sunfire)

Underdrive alternator pulley - (95-02 Cavalier/Sunfire)

2200 Motor

Stock size crank pulley - (95-02 Cavalier/Sunfire)

2.2 Motor

Stock size crank pulley - (95-02 Cavalier/Sunfire)

2.2 Ecotec Motor

Stock size crank pulley- (02-05 Cavalier/Sunfire)

2.3 Motor

Stock size crank pulley - (95 Cavalier/Sunfire)

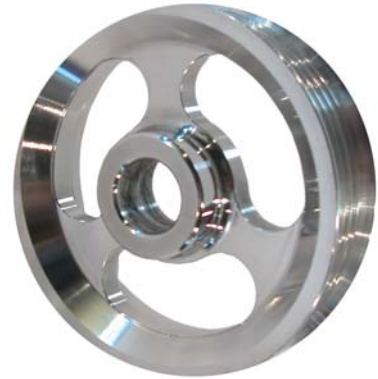
3100 Motor

Stock size crank pulley - (88-94 Cavalier/Sunbird)

3400 Motor

Stock size crank pulley - (88-94 Cavalier/Sunbird)

RSM's Lightened billet aluminum crank pulley's are designed as the lightest crank pulleys on the market for quicker revs and better acceleration.



Silicone Adapters

Sleeve, 2.50" Diameter x 2.00" Length
Sleeve, 2.75" Diameter x 2.00" Length
Sleeve, 2.75" Diameter x 3.00" Length
Sleeve, 3.00" Diameter x 1.00" Length
Sleeve, 3.00" Diameter x 2.00" Length
Sleeve, 3.00" Diameter x 3.00" Length
Sleeve, 3.25" Diameter x 1.00" Length
Sleeve, 3.25" Diameter x 2.00" Length
Sleeve, 3.50" Diameter x 2.00" Length
Sleeve, 3.50" Diameter x 3.00" Length
Sleeve, 3.75" Diameter x 2.00" Length
Sleeve, 4.00" Diameter x 2.00" Length
Sleeve, 4.00" Diameter x 3.00" Length
Sleeve, 4.50" Diameter x 2.00" Length
Sleeve, 4.50" Diameter x 2.50" Length
Sleeve, 5.00" Diameter x 2.00" Length
Sleeve, 5.00" Diameter x 3.00" Length
Reducer, 2.75" to 2.50"
Reducer, 3.00" to 2.75"
Reducer, 3.50" to 2.75"
Reducer, 3.50" to 3.00"
Reducer, 4.00" to 3.00"
Reducer, 4.00" to 3.50"
Reducer, 5.00" to 3.50"
Reducer, 5.00" to 4.00"

Call for other applications



Apparell & Graphics

Be a part of the RSM Racing Team!

Shirts:

"RSM Racing" White T-Shirt

"RSM Racing" Black T-Shirt

Available in Small, Medium, Large & Extra Large Sizes

Hats:

RSM Racing Black Hat

RSM Racing White Hat

One size fits all

Decals:

RSM Racing Windshield Decal

Small RSM Racing Decal

Available with RSM in Silver and Racing



Call to order! Toll Free Phone Number 1-877-855-4920

Custom Vehicle Packages

CTS-R Package

- Stainless Dual Exhaust System
- Air Intake
- Front and Rear Strut Tower Brace
- Lowering Springs
- 18" Rims and 245/40/18 Z Rated Tires as shown
- Rear Spoiler and CTS-R Badge
- Increases output to 250 HP, provides incredible handling and unique look while retaining factory warranty.



Aurora SS Package

- Stainless Cat-back 3" Exhaust System
 - Air Intake
 - Front and Rear Strut Tower Brace
 - Lowering Kit
 - 17" Rims and 255/40/17 Z Rated Tires as shown
 - Rear Spoiler and SS Badge
 - Increases output to 280 HP, provides incredible handling and unique look while retaining factory warranty.
- Available for 1994-2003 Aurora.



Cobalt RS Package

- Supercharger Kit Increases output to 210 HP, provides incredible handling and unique look.
 - Stainless 2.5" Exhaust System and 3" High Flow Cat
 - Air Intake
 - Front Strut Tower Brace
 - Lowering Springs
 - Slotted Front Rotors and RS Badge
- Available for 2005 Cobalt



Cavalier SS-R Package

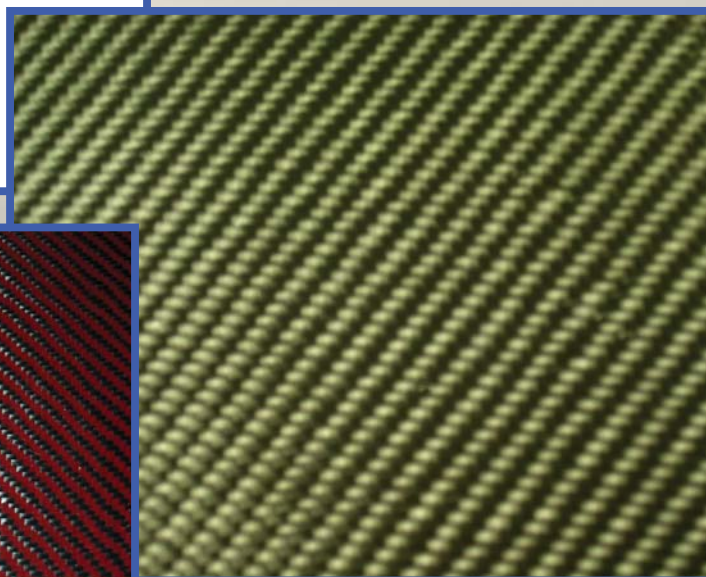
- Stainless Cat-back 2.5" Exhaust System
 - Header with 3" High Flow Cat
 - 62 mm TB and Air Intake
 - Front and Rear Strut Tower Brace
 - Lowering Springs
 - 17" Rims and 235/40/17 Z Rated Tires
 - Rear Spoiler
 - Slotted Front Rotors and SS-R Badge.
 - Increases output to 180 HP, provides incredible handling and unique look while retaining factory warranty.
- Available for 2002-2005 Cavalier and Sunfire.



Carbon Fiber Hoods

RSM CARBON FIBER HOOD/TRUNK & SPLITTERS

Constructed from hand laid Real Carbon Fiber.
Please Call for applications, model options and
more color choices.



Call to order! Toll Free Phone Number 1-877-855-4920

Performance Innovations for GM Vehicles call 1-877-855-4920

Buick

- Century
- LeSabre
- Park Avenue
- Regal

Cadillac

- CTS
- DTS
- Escalade
- ETC
- STS
- XLR

Saturn

- ION

Chevrolet

- Beretta
- Camaro
- Cavalier
- Cobalt
- Corvette
- Impala
- Lumina
- Malibu
- Monte Carlo
- Optra

Oldsmobile

- Achieva
- Alero
- Aurora
- Cutlass

Pontiac

- Bonneville
- Fiero
- Firebird
- G6
- Grand Am
- Grand Prix
- Pursuit
- Sunbird
- Sunfire
- Vibe

SUV/Vans

- Bravada
- Envoy
- Rainier
- TrailBlazer
- Aztek
- Rendezvous
- Montana
- Silhouette
- Venture

RSM Racing Inc was established in 1997 to develop performance products for the full size GM and sport compact GM market. Our product line includes most GM front wheel drive and some rear wheel drive vehicles, keeping the emphasis on performance. RSM has a fully equipped manufacturing facility where the parts are designed and manufactured, a well equipped racing shop and small show-room.

Conveniently located next to Pearson International Airport in Toronto, we are in the position to accommodate US and Canadian customers who regularly drive long distances to have RSM do the professional install on their cars. Our goal is to make the cars faster, handle better and stop quicker while keeping them reliable. RSM has its own product-line that was/is designed in-house and only available from RSM or its dealers. The impressive product-line includes Supercharger kits, handling packages, brake packages and high performance engines.



RSM
Racing
.com

rsmracing.com